

OPEN

COVID-19: POSTMORTEM DIAGNOSTIC AND BIOSAFETY CONSIDERATIONS

J. Matthew Lacy, MD (corresponding author, member NAME Ad-hoc Bioterrorism and
Infectious Disease Committee)

Chief Medical Examiner

Snohomish County Medical Examiner's Office

9509 29th Ave W

Everett, WA 98204

Phone 425-438-6205

Fax 425-438-6222

John.Lacy@co.snohomish.wa.us

Erin G. Brooks, MD (Chair, NAME Ad-hoc Bioterrorism and Infectious Disease Committee)

Associate Professor of Pathology

University of Wisconsin Hospital and Clinics

600 Highland Avenue

Madison, WI 53792

Phone 608-265-0884

Fax 608-890-7077

egbrooks@wisc.edu

Joshua Akers, MD; Danielle Armstrong, DO; Lauren Decker, MD; Adam Gonzalez, MD
William Humphrey, MD; Romana Mayer, MD; Matthew Miller, MD; Catherine Perez, MD

Jose Antonio Ruiz Arango, MD; Lakshmanan Sathyavagiswaran, MD

Wendy Stroh, DO; Suzanne Utley, MD

National Association of Medical Examiners (NAME) Ad-hoc Bioterrorism and Infectious
Disease Committee Members

Disclosures: None

This is an open-access article distributed under the terms of the Creative Commons Attribution-Non Commercial-No Derivatives License 4.0 (CCBY-NC-ND), where it is permissible to download and share the work provided it is properly cited. The work cannot be changed in any way or used commercially without permission from the journal.

This article is made available via the PMC Open Access Subset for unrestricted re-use and analyses in any form or by any means with acknowledgement of the original source. These permissions are granted for the duration of the COVID-19 pandemic or until permissions are revoked in writing. Upon expiration of these permissions, PMC is granted a perpetual license to make this article available via PMC and Europe PMC, consistent with existing copyright protections.

ABSTRACT

As a result of the 2019 novel human coronavirus (COVID-19) global spread, medical examiner/coroner offices will inevitably encounter increased numbers of COVID-19-infected decedents at autopsy. While in some cases a history of fever and/or respiratory distress (e.g. cough or shortness of breath) may suggest the diagnosis, epidemiologic studies indicate that the majority of individuals infected with COVID-19 develop mild to no symptoms. Those dying with—but not of—COVID-19 may still be infectious, however. While multiple guidelines have been issued regarding autopsy protocol in cases of suspected COVID-19 deaths, there is some variability in the recommendations. Additionally, limited recommendations to date have been issued regarding scene investigative protocol, and there are a paucity of publications characterizing COVID-19 postmortem gross and histologic findings. A case of sudden unexpected death due to COVID-19 is presented as a means of illustrating common autopsy findings, as well as diagnostic and biosafety considerations. We also review and summarize the current COVID-19 literature in an effort to provide practical evidence-based biosafety guidance for ME/C offices encountering COVID-19 at autopsy.

Key Words: coronavirus, COVID-19, SARS-CoV-2, autopsy biosafety

INTRODUCTION

SARS-CoV-2 is a novel human coronavirus that was detected as the causative agent of human respiratory infection (COVID-19) in Wuhan, China, in December 2019. It is related to SARS-CoV and MERS-CoV, other human coronaviruses responsible for outbreaks of severe acute respiratory syndrome first detected in China in 2002-2003 and in Saudi Arabia in 2012 respectively. ¹ Based on currently available global data, COVID-19 is thought to cause mild, limited, or no symptoms in at least 80% of those infected. ²⁻⁴ A substantial portion of COVID-infected individuals are suspected to be asymptomatic carriers; estimates derived from select populations of quarantined individuals who underwent widespread testing (e.g. cruise ship passengers and Japanese citizens evacuated from China) range from 18-33%.⁵⁻⁶ Of those known to be COVID-19 positive, approximately 20-30% will develop more severe disease necessitating hospitalization. Such disease may progress to acute respiratory distress syndrome (ARDS), sepsis, multiorgan failure, and death. ⁷⁻⁹ Risk factors for severe disease have been reported to include advanced age, hypertension, and diabetes—although recent data suggests hospitalization may be more common among younger COVID-19 patients than previously suspected. ⁷⁻⁸

Case fatality ratios range widely from 0.2-7.7% depending on the population age, prevalence of comorbidities, testing criteria and availability, health care capacity, and how cases are defined.¹⁰⁻¹³ A variety of electronic databases provide ongoing daily monitoring of COVID-19 cases tabulated by country.¹⁴⁻¹⁶ Inevitably there will be an increased number of suspected or confirmed COVID-19 deaths encountered at autopsy. While multiple guidelines have been issued regarding autopsy protocol in cases of suspected or confirmed COVID-19 deaths, there is some variability in the recommendations. ¹⁷⁻²¹ Additionally, limited recommendations to date have been

issued regarding scene investigative protocol. We present a case of sudden unexpected death due to COVID-19 as a means of illustrating suggestive autopsy findings, diagnostic considerations, and recommended scene and morgue biosafety practices in novel coronavirus deaths.

CASE REPORT

History

A 58-year-old woman reported a week of fevers and respiratory difficulty. Her medical history was significant for insulin-dependent type 2 diabetes mellitus (hemoglobin A1c range: 7 – 11%), obesity, hyperlipidemia, mild intermittent asthma, and chronic lower extremity swelling with ulceration. She was instructed to stay home and self-quarantine by her retail store employer. She was found dead in her bedroom after last being known alive the night before. Emergency medical services responded to the scene and attempted resuscitation before pronouncing death and notifying the medical examiner's office.

Scene Investigation

Two medicolegal death investigators performed a scene investigation. Family members were interviewed outside the residence, eliciting the information that several of the decedent's coworkers and an adult member of her household had also developed respiratory illness symptoms. At least 6 feet (i.e. 2 meters) of separation was maintained between investigators and family members during interview. Prior to entering the residence, investigators donned personal protective equipment (PPE) sufficient for contact and droplet precautions including gloves, fluid-resistant gown, a barrier face mask and goggles.^{17-18, 20} A camera was employed to document the scene photographically; otherwise, minimal equipment was brought into the residence. Following

documentation, the body was examined and placed in a plastic shroud and then sealed in a body bag and loaded into the transport vehicle. After the body was secured, investigators doffed their PPE and performed hand hygiene with an alcohol-based gel. The body was then transported to the morgue and logged in without opening the outer body bag. The transport vehicle was disinfected with a dilute bleach solution.

Autopsy Protocol

An autopsy was performed in a separate negative pressure isolation suite adjacent to the main morgue room but on its own heating, ventilation and air-conditioning (HVAC) circuit with 16 air changes per hour. Only two operators (i.e. a pathologist and a technician) were permitted in the isolation suite during the case. A second technician acted as a circulator and monitored the case via an observation window; communication was facilitated via inexpensive low-power walkie-talkies. A small isolation cooler attached to the isolation room acted as an airlock to facilitate transfer of materials into and out of the isolation suite during the prosection (Fig. 1).

In accordance with guidelines, PPE utilized by autopsy prosectors included scrubs, dedicated autopsy footwear with shoe covers, a long-sleeve water resistant gown or Tyvek suit, a long-sleeved splash apron, double gloves and cut gloves, hair covers, and a powered air-purifying respirator (PAPR) with full-face shield (Fig. 2).¹⁷⁻²¹ Grossly soiled PPE was frequently wiped down with disinfectant wipes or dilute bleach solution during the procedure. Doffing of PPE at the end of the procedure occurred in the isolation cooler airlock and was monitored by an inspector.

The autopsy was performed with minor modifications to standard procedures. In order to minimize potential organism aerosolization, the sink-mounted vacuum aspirator, sink drain tissue grinder, and station hose were not used. All fluid collections were ladled from body cavities. Although the head was opened with a powered oscillating saw, the upper half of the body, head of the table, and floor surrounding these areas was misted with disinfectant immediately upon cessation of powered sawing and before brain removal. Only one prosector remained in the room during the sawing; for at least 10 minutes afterwards (i.e. 2 full air changes) no additional personnel entered the room. Cleaning of the body and autopsy table was accomplished with towels that were subsequently discarded. Limited body and specimen photography was accomplished either in situ or on a small photography board near the body.

Post-Autopsy Procedures

Following autopsy, the body was closed in the standard fashion and cleaned with damp towels and disinfectant. A clean body table with a clean body bag and plastic shroud spread out on it had been placed in the isolation cooler airlock by the second technician. This was moved into the isolation suite and the body was transferred onto the clean shroud, wrapped tightly and sealed with tape, then zipped into the clean body bag. This procedure allowed the outer surfaces of the shroud and body bag to remain essentially clean. Once sealed, the outer bag was labeled and signed by the pathologist and technician, each verifying the identity of the decedent. The outer surface of the body bag was then sprayed with disinfectant and the body table was removed to the isolation cooler where residual liquid disinfectant was removed and the bag labeled as infectious.

Release procedures were modified to prevent opening the body bag or shroud for visual identification confirmation by funeral home staff while the body was still in the facility. The dual signatures of the pathologist and technician acted as the confirmation that the body bag contained the correct decedent, and release to the funeral home was performed without opening the outer bag. The infectious nature of the case was disclosed to the funeral home personnel at the time of release. Notably, none of the personnel involved in this index case (i.e. pathologist, technicians, scene investigators) suffered any symptoms consistent with COVID infection in the two weeks following their involvement in the case nor since.

Gross Findings

External examination revealed an obese (BMI: 38 kg/m²) middle-aged adult woman with fully developed rigor mortis and blanching livor mortis. Changes of lower extremity venous stasis and scarring consistent with the history of lower leg ulcers were present. On internal examination there were no pleural effusions or other abnormal fluid collections. Thick mucus was noted in the airways, however. The lungs were moderately heavy and edematous (right: 818 g, left: 705 g) and had a relatively firm texture throughout. Areas of hemorrhage were evident in the right upper and middle lobes, and to a lesser extent in the left lower lobe (Fig. 3.) Hilar and mediastinal lymph nodes appeared enlarged.

The heart weighed 438 g and exhibited moderate coronary atherosclerosis in each of the main coronary distributions, but there were no occlusions or critical stenoses. The myocardium was free of obvious infarcts and had the expected firm texture and red-brown color. The left ventricle was 1.2-1.4 cm thick. The cardiac valves were normal. There was moderate infrarenal

aortic atherosclerosis. The kidneys were finely granular and had focal cortical scars (right 170 g, left 183 g). The spleen had a normal appearing capsule and parenchyma (148 g). The liver (1990 g) was grossly unremarkable. The brain (1221 g) exhibited hydrocephalus ex vacuo; the frontal horns measured 2.8 cm in greatest dimension at the level of the temporal poles. Tissue sections were placed in 10% neutral-buffered formalin and allowed to fix for 72 hours prior to histologic sampling. Hematoxylin and eosin (H&E) staining was performed by an outside laboratory.

Microscopic Findings

Histologic examination of the lungs revealed diffuse proteinaceous edema and dense amphophilic concretions along alveolar septae consistent with hyaline membranes. The lung architecture was preserved and the septae were of normal thickness, but mild mononuclear infiltrates were present throughout. There was prominent desquamating pneumocyte hyperplasia with focal multinucleated cells and bizarre forms. Acute alveolar hemorrhage and collections of reactive foamy alveolar macrophages were focally present as were collections of alveolar fibrin (Fig. 4.) No viral inclusions or specific cytopathic changes were identified. Suppurative inflammation was absent. No fibroblastic foci, fibrosis, granulomas, or foreign bodies were appreciated.

Sections of myocardium demonstrated myocyte hypertrophy with interstitial and perivascular fibrous tissue but no acute ischemic changes or inflammatory infiltrates. The liver exhibited mild steatosis and central lobular pallor and congestion but no significant portal or lobular inflammation. Renal changes included arteriosclerosis, mesangial sclerosis and hypercellularity, and focal global glomerulosclerosis. A section of medulla had no inflammatory

or ischemic changes. An incidental adrenal cortical nodule and a focus of papillary adenocarcinoma of the thyroid were also detected.

Ancillary Testing

Dacron-tipped swabs of the right and left main bronchi were procured, placed into viral transport medium, and submitted to the Washington State Public Health Laboratory for both SARS-CoV-2 and influenza testing. Bacterial swabs of areas of potential consolidation were placed in Amies transport media tubes and submitted to the University of Washington microbiology laboratory for culture. The reverse-transcriptase polymerase chain reaction (RT-PCR) results for SARS-CoV-2 returned as positive 11.5 hours after submission. Negative influenza results returned several days later. Bacterial cultures were positive for methicillin sensitive *Staphylococcus aureus* and *Streptococcus viridans*. Given the lack of acute histologic inflammation in the lungs, these bacterial culture results were interpreted as being most likely contaminants or postmortem artifact.

Death Certification

Based on the above autopsy and investigative findings, and in accordance with US National Vital Statistics certification guidelines, the cause of death was determined to be acute respiratory distress syndrome due to viral pneumonia due to COVID-19.²² Other significant contributory factors included type 2 diabetes mellitus, hypertension, and obesity. The state department of health was notified.

DISCUSSION

Currently every state in the U.S. has reported COVID-19 cases, resulting in a total of over 7600 deaths to date.²³ Inevitably ME/C offices will encounter increased numbers of SARS-CoV-2 infected decedents at autopsy as a result of COVID-19 spread. While in some cases a history of fever and/or respiratory distress (e.g. cough or shortness of breath) may suggest the diagnosis, epidemiologic studies indicate that the majority of individuals infected with COVID-19 develop mild to no symptoms.² Even those dying with—but not of—COVID-19 may still be infectious. Transmission of SARS-CoV-2 from presymptomatic/asymptomatic individuals has been documented, although the frequency remains to be established.²⁴⁻²⁷ ME/C must use their judgment to determine whether postmortem COVID-19 testing and/or autopsy should be pursued. In addition to suggestive antemortem signs/symptoms, epidemiologic factors may also help guide decisions such as history of contact with a known COVID-19 positive case, or being a part of a cluster of respiratory illness cases in a closed setting (e.g., a nursing care facility).¹⁷ The presented autopsy case and literature review are intended to help familiarize ME/C offices with COVID-19 disease features, diagnostic strategies, and key biosafety principles.

Transmission

It is suspected that SARS-CoV-2—similar to SARS-CoV and MERS-CoV—began as a zoonotic coronavirus that subsequently spread to humans.¹ Community and healthcare-associated person-to-person transmission were documented early in the pandemic, and direct or close contact with infectious persons is believed to be the major mode of transmission.²⁸⁻²⁹ Transmission occurs through exposure to infectious droplets originating from the respiratory tract; infectious droplets may be released from an infected individual via sneezing, coughing, talking or undergoing an

aerosolizing procedure such as intubation or autopsy.³⁰⁻³¹ Reportedly droplets do not typically spread beyond 6 feet (2 meters) nor linger in air, although some evidence has suggested a longer range of spread may be possible.³¹⁻³² Less commonly infection may arise as a result of indirect transmission through fomites, especially if the eyes, face, or mouth are contacted after touching an infected surface.^{31, 33} SARS-CoV-2 has also been detected in blood and anal swabs; increasing evidence suggests that fecal-oral transmission may be another potential route of spread.³⁴⁻³⁶

Scene Investigation

As in the current presented case, investigators are advised to mitigate risk of potential SARS-CoV-2 exposure at death scenes by standing at a distance ≥ 6 feet when conducting interviews and requesting interviewees to remain outside the residence while investigators enter. As the CDC has recently issued recommendations for the public to wear cloth facial coverings when at risk of social-based transmission, scene investigators may consider encouraging interviewees to don cloth facial masks.³⁷ Scene investigators should don contact and droplet precaution PPE when entering residences. Decontamination of all potentially contaminated equipment, careful body bagging procedures, and investigator hand hygiene are also encouraged. Anecdotally, this has been the scene investigative policy of the Snohomish County Medical Examiner's Office which despite being the county with the second highest number of positive/confirmed COVID cases in the state of Washington has had no scene investigators test positive for SARS-CoV-2 to date. In order to more efficiently triage cases, ME/C offices may elect to have scene investigators procure nasopharyngeal viral testing swabs at the scene. Scene investigative recommendations are summarized in Table 1.

Morgue and PPE

Each office is advised to carefully assess its own infrastructure, supplies, and staffing to determine whether suspected or confirmed COVID-19 deaths can be safely prosecuted on-site. Current CDC and WHO recommendations are that suspected/confirmed COVID-19 autopsies be prosecuted in an airborne infection isolation rooms at negative pressure relative to surrounding areas, and ideally with at least 12 air changes per hour (though 6 will suffice in older structures.)^{17,20} Air from isolation rooms should be exhausted directly outside or else pass through a high-efficiency particulate air (HEPA) filter if recirculated.¹⁷⁻¹⁸ Recommended PPE includes standard autopsy protection (i.e. double surgical gloves interposed with a layer of cut-proof synthetic mesh gloves, scrub suit worn under an impermeable long-sleeve gown/apron, goggles or face shield, shoe covers, and surgical cap.)¹⁷⁻²⁰ As autopsy prosecution may generate aerosols, respiratory protection consisting of a disposable N-95 respirator or powered, air-purifying respirator (PAPR) with HEPA filter is also indicated.¹⁷⁻²¹

Given national PPE supply limitations, ME/C offices are encouraged to restrict autopsy attendance to key personnel only (i.e. prosecutor and technician).³⁸ In order to preserve eyewear, preferential use of powered air purifying respirators or goggles which can be reused following appropriate disinfection should be considered.³⁹ In general, PAPRs are preferable to N95 respirator masks as they provide even higher protection to prosecutors and—with appropriate disinfection of reusable elements after use—can be repeatedly employed thus assisting with PPE conservation efforts.⁴⁰ PAPR filters should be replaced in accordance with manufacturer recommendations. Some studies have suggested the possibility of decontaminating and reusing

N95 masks via ultraviolet germicidal irradiation (UVGI), hydrogen peroxide vapor sterilization, and simply allowing respirators to hang to dry for 3 days.^{38, 41-45} Proposals for respirator mask construction have also been offered.³⁸ Further details regarding PPE conservation strategies are beyond the bounds of the current review but are available through the CDC.³⁹

Autopsy Protocol

Aerosol generation at autopsy may occur through inadvertent splashing of fluids, puncturing of fluid pockets under pressure, and use of vacuum-assisted suction devices and sink-mounted tissue grinders.³⁸⁻⁴² However, the most likely aerosol generating autopsy procedure is use of powered oscillating bone saws, particularly during brain removal.⁴⁶⁻⁵⁰ High densities of aerosolized particles are generated in the region of the saw placing the user at risk. While N95 respirator masks physically filter 95% of particles at least 1 μm in size from the inspired air, CDC and OSHA guidelines nonetheless suggest avoiding use of an oscillating bone saw at autopsy in cases of suspected/confirmed COVID-19. If a saw is employed, it is recommended that a vacuum shroud be attached to assist in capturing aerosols.¹⁷⁻¹⁸ Other oscillating saw aerosol reduction techniques to consider include moistening the saw blade before cutting, using autopsy tables with built-in ventilation, tenting plastic around the decedent's neck and head to entrap aerosols, and wearing a HEPA-filtered PAPR rather than N95 mask.⁴⁶⁻⁴⁹ As in the current presented case, other general splash and aerosol reduction techniques (e.g. eschewing use of vacuum assisted aspirator, sink tissue grinder, or hose) are also advised. Autopsy protocol recommendations are summarized in Table 2.

Gross and Histologic Features

While much literature has been published regarding COVID-19 signs/symptoms and clinical course, there is currently a paucity of data regarding expected postmortem gross and histologic findings. The case presented herein adds to those few previously published studies. Lungs are often heavy and histologically reveal edema with focal/diffuse hyaline membrane formation, pneumocyte hyperplasia, patchy mononuclear inflammatory infiltrates, some multinucleated cells, and a lack of definitive intranuclear or intracytoplasmic viral inclusions.⁵¹⁻⁵² Overall, pulmonary pathologic features generally appear consistent with early/organizing diffuse alveolar damage, and resemble those seen in SARS autopsies.⁵¹⁻⁵³ While myocarditis has been reported in association with COVID-19, it appears to be a less common complication.⁵⁴⁻⁵⁵ Most typically (as in the presented case) minimal mononuclear myocardial inflammatory involvement is found. Rarely, COVID-19 associated encephalitis has been reported.⁵⁶

Decontamination

In one experimental study, viable SARS-CoV-2 was detected up to 72 hours after being placed onto plastic and stainless steel surfaces; it also remained viable in an experimentally created aerosol for at least 3 hours, although infectious titers per liter of air decreased over time.⁵⁷ A recent review and analysis of literature found that generally human coronaviruses can remain infectious for up to 9 days on inanimate surfaces, depending on surface type and temperature; at temperatures $\geq 30^{\circ}$ C (i.e. 86° F) viral persistence shortened.⁵⁸ Given that SARS-CoV-2 may remain viable on a variety of inanimate surfaces for a matter of days, careful morgue decontamination procedures are key. Surface disinfection with diluted household bleach solutions (i.e. of 0.1% sodium hypochlorite), 0.5% hydrogen peroxide solutions, or alcohol solutions (i.e. with at least 70%

ethanol) have been shown to inactivate human coronaviruses within 1 minute.⁵⁸⁻⁵⁹ For hospital-grade disinfectants, staff should verify their suitability for use against SARS-CoV-2 and ensure disinfectants remain on surfaces in accordance with US Environmental Protection Agency recommendations.⁶⁰⁻⁶¹ While conclusive data regarding how long infectious human remains may harbor infectious SARS-CoV-2 is lacking, autopsies in cases of SARS found that SARS-CoV could be recovered from lung tissue and grown in cell culture up to seven days after death.⁶²⁻⁶³ Considering that there is reportedly 75-80% similarity between the viral genomes of SARS-CoV-2 (causative agent of COVID-19) and SARS-CoV (causative agent of SARS), these results suggest that protective precautions are called for even in cases of delayed suspected COVID-19 death investigations or autopsies.^{1, 64} While limited data exists regarding formalin inactivation of SARS-CoV-2 infected tissue, formalin fixation at room temperature has been shown to inactivate most of SARS-CoV (i.e. close to assay detection limits) within a day.⁶⁴⁻⁶⁵

Diagnosis

In cases of suspected COVID-19 in which full autopsies are performed, submission of SARS-CoV-2 swabs from both upper and bilateral lower respiratory tracts is recommended by the CDC.¹⁷ If nasopharyngeal as well as bilateral tracheobronchial/lung swabs are procured it is recommended they be submitted in separate vials each containing 2-3 ml of viral transport medium.¹⁷ ME/C offices, however, must be cognizant of their current state health department testing capacity and proceed accordingly.^{17,19} A rational strategy for minimizing the number of swab submissions per autopsy is to submit swabs only from the lower respiratory tract. Additionally, sampling both lungs with a single swab may increase recovery of viral RNA. Concurrent testing for other causes of respiratory illness such as influenza is also strongly

encouraged.^{17,19} In order to preserve limited viral testing kit supply, ME/C offices are encouraged to communicate with their testing laboratories to verify whether COVID-19 as well as other respiratory viral pathogen testing can be performed on a single swab. Prosectors should submit a separate samples for bacterial/fungal organisms as indicated. In cases of suspected COVID-19 in which autopsy is not performed, nasopharyngeal swab testing for COVID-19 as well as other respiratory pathogens is recommended.¹⁷

Only synthetic fiber swabs with plastic shafts should be submitted for SARS-CoV-2 reverse-transcriptase polymerase chain reaction (RT-PCR) testing, as others may inactivate virus or otherwise inhibit the testing. In the event that swabs were not procured at autopsy, fixed autopsy tissue specimens may also be submitted to CDC in suspected COVID-19 deaths for immunohistochemical, molecular, or other assay characterization.¹⁷ Recent diagnostic advancements include the Food and Drug Administration (FDA) emergency use authorization (EUA) enabling US laboratories already certified for high complexity testing to develop and validate their own SARS-CoV-2 testing; this markedly augmented diagnostic capability as previously all testing was performed mainly by US public health laboratories.⁶⁶ Additionally, there has been EUA approval of rapid COVID-19 PCR diagnostic tests that some manufacturers report can deliver results in less than an hour.⁶⁷ Recently, a serologic enzyme-linked immunosorbent assay (ELISA) testing to assess for COVID-19 antibodies has received FDA approval and more are in development; these are expected to prove of utility in more accurately calculating disease transmission and mortality rates.⁶⁷⁻⁶⁹

Case Triage

Previous surveys have indicated that morgues are heterogeneous in their preparedness to handle highly infectious disease cases.⁷⁰⁻⁷¹ Facility environmental controls, availability of personal protective equipment (PPE), and staffing are all factors that ME/C must carefully assess in determining whether suspected/confirmed COVID-19 deaths will be autopsied.^{17,19} The majority of known COVID-19 deaths technically should not fall under ME/C office jurisdiction as they are natural deaths predominantly occurring in hospitalized patients.⁷² While autopsy is unlikely to be necessary in such cases—and is, in fact, discouraged by OSHA—ME/C may nonetheless be called upon to facilitate death certification ensuring accurate public health disease tracking, or in cases of medicolegal significance (homicides, accidents or suicides) where a decedent expires in the hospital and is COVID-19 positive due to community spread.^{18,72}

In deaths occurring outside of the hospital setting ME/C offices are tasked with determining whether deaths are attributable to COVID-19 or not, and performing autopsies as needed.⁷² ME/C offices may elect to triage cases by taking viral NP swabs in suspected COVID-19 deaths and reserve autopsy for those decedents with negative testing results or else cases in which SARS-CoV-2 infection is thought to be incidental rather than the cause of death. Performing a nasopharyngeal (NP) swab for SARS-CoV-2 requires neither a negative pressure room nor N95 respirator; basic contact and droplet precaution PPE are sufficient.¹⁷ In cases in which autopsy is merited, the above described precautions should be followed to prevent morgue staff-acquired COVID-19 infection. Some offices have elected to perform limited autopsies (e.g. precluding brain/spinal cord removal) in cases of suspected/known COVID-19 positivity to reduce morgue staff aerosol exposure. Others have incorporated antemortem or postmortem CT radiology as a

means of helping triage decedents meriting testing and/or autopsy.^{19,21} Establishing collaborative relations with larger ME/C offices capable of safely autopsying suspected highly infectious disease cases should be encouraged. Globally, mobile biosafety autopsy facilities/laboratories with sophisticated infrastructure have been deployed during disease epidemics such as SARS and Ebola virus; advantages include the ability to mobilize rapidly to areas of need with minimal footprint.⁷³⁻
⁷⁵ Such mobile facilities may be advisable in the US as well.

Body Disposition

Neither CDC nor WHO guidelines require double-bagging of known COVID-19 positive decedents; however, ME/C offices should ensure that any body fluids leaking from orifices are contained.^{17,20} Utilizing cotton packing of orifices, a plastic shroud, or a second body bag are all potential methods of preventing fluid leakage. Following appropriate decontamination of the body bag, a method of clearly designating the infectious nature of contents to funeral home personnel should be employed (e.g. body bag notification sticker); ME/C offices may want to consider modifying body release procedures to preclude contamination risks of opening body bag in morgue for funeral personnel identification.⁷⁶ There is currently no CDC nor WHO requirement for cremation of COVID-19 positive decedents.^{17,20} While decedents can be buried or cremated as per current state requirements, burial may result in storage difficulties as social distancing-related funeral service delays. Further details of recommended funeral home/mortuary protocol in cases of COVID-19 positive decedents can be accessed on both the CDC as well as National Funeral Directors Association websites.⁷⁷⁻⁷⁸ ME/C offices are encouraged to closely collaborate with funeral homes/mortuaries to ensure body transportation and storage needs are met. In jurisdictions

with a required waiting period prior to cremation (e.g. 48 hours) investigating the possibility of a waiver in order to alleviate decedent storage issues may be advisable.

CONCLUSION

Although much remains to be learned about SARS-CoV-2, recommendations for handling decedents with known or suspected COVID-19 are available from multiple national and international organizations.¹⁷⁻²¹ Additionally, much can be inferred from experiences with prior coronavirus outbreaks such as SARS-CoV and MERS-CoV. In order to ensure safety of scene investigators, medical examiners/coroners (ME/C), and morgue staff, developing an understanding of SARS-CoV-2 transmission, presentation, and prevention strategies is key. The current case presentation with literature review are intended to better inform and provide practical evidence-based biosafety guidance for ME/C offices encountering COVID-19 at autopsy. As community spread of COVID-19 increases, ME/C offices are encouraged to employ these biosafety principles broadly, as COVID carriers may be presymptomatic or asymptomatic, and yet still present infectious risk at autopsy. ME/C offices are cautioned that suspicious scene investigative history (e.g. nursing home resident or individual from homeless encampment) cannot necessarily be relied upon to identify COVID carriers. It is hoped that by documenting and sharing postmortem findings ME/C offices can provide new insights into the pathogenesis of SARS-CoV-2, and potentially assist in formulating therapeutic strategies to reduce disease mortality.

REFERENCES

1. Lu R, Zhao X, Li J, Niu P, Yang B, Wu H, et al. Genomic characterization and epidemiology of 2019 novel coronavirus: implications for virus origins and receptor binding. *The Lancet*. 2020;395(10224):565–74. [https://doi.org/10.1016/S0140-6736\(20\)30251-8](https://doi.org/10.1016/S0140-6736(20)30251-8).
2. Wu Z, McGoogan JM. Characteristics of and important lessons from the Coronavirus Disease 2019 (COVID-19) outbreak in China: summary of a report of 72 314 Cases from the Chinese Center for Disease Control and Prevention. *JAMA*. 2020 Feb 24. doi: 10.1001/jama.2020.2648. [Epub ahead of print]
3. World Health Organization (WHO). Report of the WHO-China joint mission on Coronavirus Disease 2019 (COVID-19). February 28, 2020. Available at: [https://www.who.int/publications-detail/report-of-the-who-china-joint-mission-on-coronavirus-disease-2019-\(covid-19\)](https://www.who.int/publications-detail/report-of-the-who-china-joint-mission-on-coronavirus-disease-2019-(covid-19)). Accessed on: April 4, 2020.
4. Li R, Pei S, Chen B, et al. Substantial undocumented infection facilitates the rapid dissemination of novel coronavirus (SARS-CoV2). *Science*. 2020 Mar 16. pii: eabb3221. doi: 10.1126/science.abb3221. [Epub ahead of print]
5. Nishiura H, Kobayashi T, Suzuki A, et al. Estimation of the asymptomatic ratio of novel coronavirus infections (COVID-19). *Int J Infect Dis*. 2020 Mar 13. pii: S1201-9712(20)30139-9. doi: 10.1016/j.ijid.2020.03.020. [Epub ahead of print]
6. Mizumoto K, Kagaya K, Zarebski A, et al. Estimating the asymptomatic proportion of coronavirus disease 2019 (COVID-19) cases on board the Diamond Princess cruise ship, Yokohama, Japan, 2020. *Euro Surveill*. 2020;25(10):2000180. doi:10.2807/1560-7917.ES.2020.25.10.2000180
7. Zhou F, Yu T, Du R, Fan G, Liu Y, Liu Z, et al. Clinical course and risk factors for mortality of adult inpatients with COVID-19 in Wuhan, China: a retrospective cohort study. *The Lancet*.

2020. Mar 11. pii: S0140-6736(20)30566-3. doi: 10.1016/S0140-6736(20)30566-3. [Epub ahead of print]

8. Centers for Disease Control and Prevention (CDC). Severe outcomes among patients with Coronavirus Disease 2019 (COVID-19) — United States, February 12–March 16, 2020. *Morb Mortal Wkly Rep*. ePub: March 18, 2020. DOI: <http://dx.doi.org/10.15585/mmwr.mm6912e2>

9. European Centre for Disease Control and Prevention (ECDC.) Coronavirus disease 2019 (COVID-19) pandemic: increased transmission in the EU/EEA and the UK – seventh update. March 25, 2020. Available at: <https://www.ecdc.europa.eu/en/publications-data/rapid-risk-assessment-coronavirus-disease-2019-covid-19-pandemic>. Accessed on: April 4, 2020.

10. Lazzerini M, Putoto G. COVID-19 in Italy: momentous decisions and many uncertainties. *Lancet Glob Health*. 2020 Mar 18. pii: S2214-109X(20)30110-8. doi: 10.1016/S2214-109X(20)30110-8. [Epub ahead of print]

11. Verity R, Okell LC, Dorigatti I, et al. Estimates of the severity of coronavirus disease 2019: a model-based analysis. *Lancet Infect Dis*. 2020 Mar 30. pii: S1473-3099(20)30243-7. doi: 10.1016/S1473-3099(20)30243-7. [Epub ahead of print]

12. World Health Organization (WHO.) WHO Director-General's opening remarks at the media briefing on COVID-19. March 3, 2020. Available at: <https://www.who.int/dg/speeches/detail/who-director-general-s-opening-remarks-at-the-media-briefing-on-covid-19---3-march-2020>. Accessed on April 4, 2020.

13. Onder G, Rezza G, Brusaferro S. Case-fatality rate and characteristics of patients dying in relation to COVID-19 in Italy. *JAMA*. 2020 Mar 23. doi: 10.1001/jama.2020.4683. [Epub ahead of print]

14. European Centre for Disease Prevention and Control (ECDC.) COVID-19 situation update—worldwide. Available at: <https://www.ecdc.europa.eu/en/geographical-distribution-2019-ncov-cases>. Accessed on: April 4, 2020.

15. World Health Organization (WHO.) Coronavirus disease (COVID-2019) situation reports. Available at: <https://www.who.int/emergencies/diseases/novel-coronavirus-2019/situation-reports>. Accessed on: April 4, 2020.
16. Johns Hopkins University (JHU). Coronavirus COVID-19 Global Cases by the Center for Systems Science and Engineering (CSSE) at JHU. Available at: <https://coronavirus.jhu.edu/map.html>. Accessed on: April 4, 2020.
17. Centers for Disease Control and Prevention (CDC). Collection and Submission of Postmortem Specimens from Deceased Persons with Known or Suspected COVID-19, March 2020 (Interim Guidance). March 25, 2020. Available at: <https://www.cdc.gov/coronavirus/2019-ncov/hcp/guidance-postmortem-specimens.html>. Accessed March 26, 2020.
18. Occupational Safety and Health Administration (OSHA). COVID-19 Control and Prevention. Available at: <https://www.osha.gov/SLTC/covid-19/controlprevention.html>. Accessed March 26, 2020.
19. Hanley B, Lucas SB, Youd E, Swift B, Osborn M. Autopsy in suspected COVID-19 cases. *J Clin Pathol*. 2020 Mar 20. pii: jclinpath-2020-206522. doi: 10.1136/jclinpath-2020-206522. [Epub ahead of print]
20. World Health Organization (WHO). Infection prevention and control for the safe management of a dead body in the context of COVID-19. March 24, 2020. Available at: https://apps.who.int/iris/bitstream/handle/10665/331538/WHO-COVID-19-IPC_DBMgmt-2020.1-eng.pdf. Accessed March 26, 2020.
21. Fineschi V, Aprile A, Aquila I, et al. Management of the corpse with suspect, probable or confirmed COVID-19 respiratory infection – Italian interim recommendations for personnel potentially exposed to material from corpses, including body fluids, in morgue structures and during autopsy practice. *Pathologica*. Epub 2020 Mar 26. <https://doi.org/10.32074/1591-951X-13-20>.

22. National Vital Statistics System (NVSS). Guidance for certifying deaths due to Coronavirus Disease 2019 (COVID-19.) April 2, 2020. Available at: <https://www.cdc.gov/nchs/nvss/covid-19.htm>. Accessed April 4, 2020.
23. Centers for Disease Control and Prevention. Coronavirus Disease 2019 COVID-19: Cases in U.S. March 28, 2020. Available at: <https://www.cdc.gov/coronavirus/2019-ncov/cases-updates/cases-in-us.html>. Accessed on: March 28, 2020.
24. Rothe C, Schunk M, Sothmann P, et al. Transmission of 2019-nCoV infection from an asymptomatic contact in Germany. *N Engl J Med*. 2020 Mar 5;382(10):970-971.
25. Hu Z, Song C, Xu C, et al. Clinical characteristics of 24 asymptomatic infections with COVID-19 screened among close contacts in Nanjing, China. *Sci China Life Sci*. 2020 Mar 4. doi: 10.1007/s11427-020-1661-4. [Epub ahead of print]
26. Wei WE, Li Z, Chiew CJ, Yong SE, Toh MP, Lee VJ. Presymptomatic transmission of SARS-CoV-2 — Singapore, January 23–March 16, 2020. *Morb Mortal Wkly Rep*. ePub: 1 April 2020. DOI: [http://dx.doi.org/10.15585/mmwr.mm6914e1external icon](http://dx.doi.org/10.15585/mmwr.mm6914e1external%20icon).
27. Hoehl S, Rabenau H, Berger A, et al. Evidence of SARS-CoV-2 infection in returning travelers from Wuhan, China. *N Engl J Med*. 2020 Mar 26;382(13):1278-1280. doi: 10.1056/NEJMc2001899. Epub 2020 Feb 18.
28. Chan JF-W, Yuan S, Kok K-H, To KK-W, Chu H, Yang J, et al. A familial cluster of pneumonia associated with the 2019 novel coronavirus indicating person-to-person transmission: a study of a family cluster. *The Lancet* 2020;395(10223):514–23. [https://doi.org/10.1016/S0140-6736\(20\)30154-9](https://doi.org/10.1016/S0140-6736(20)30154-9).
29. Ghinai I, McPherson TD, Hunter JC, Kirking HL, Christiansen D, Joshi K, et al. First known person-to-person transmission of severe acute respiratory syndrome coronavirus 2 (SARS-CoV-2) in the USA. *The Lancet* 2020. [https://doi.org/10.1016/S0140-6736\(20\)30607-3](https://doi.org/10.1016/S0140-6736(20)30607-3).

30. Zou L, Ruan F, Huang M, Liang L, Huang H, Hong Z, et al. SARS-CoV-2 Viral Load in Upper Respiratory Specimens of Infected Patients. *N Engl J Med* 2020;382(12):1177–9. <https://doi.org/10.1056/NEJMc2001737>.
31. Centers for Disease Control and Prevention (CDC). How coronavirus spreads. March 4, 2020. Available at: <https://www.cdc.gov/coronavirus/2019-ncov/prepare/transmission.html>. Accessed on March 26, 2020.
32. Bourouiba L. Turbulent gas clouds and respiratory pathogen emissions: potential implications for reducing transmission of COVID-19. *JAMA*. 2020 Mar 26. doi: 10.1001/jama.2020.4756. [Epub ahead of print]
33. Cai J, Sun W, Huang J, Gamber M, Wu J, He G. Early Release - Indirect Virus Transmission in Cluster of COVID-19 Cases, Wenzhou, China, 2020 - Volume 26, Number
Wang W, Xu Y, Gao R, et al. Detection of SARS-CoV-2 in Different Types of Clinical Specimens. *JAMA*. Published online March 11, 2020. DOI:10.1001/jama.2020.3786.
34. Zhang W, Du RH, Li B, et al. Molecular and serological investigation of 2019-nCoV infected patients: implication of multiple shedding routes. *Emerg Microbes Infect*. 2020 Feb 17;9(1):386-389.
35. Ong SWX, Tan YK, Chia PY, et al. Air, surface environmental, and personal protective equipment contamination by Severe Acute Respiratory Syndrome Coronavirus 2 (SARS-CoV-2) from a symptomatic patient. *JAMA*. 2020 Mar 4. doi: 10.1001/jama.2020.3227. [Epub ahead of print]
36. Gu J, Han B, Wang J. COVID-19: Gastrointestinal manifestations and potential fecal-oral transmission. *Gastroenterology*. 2020 Mar 3. pii: S0016-5085(20)30281-X. doi: 10.1053/j.gastro.2020.02.054. [Epub ahead of print]
37. Centers for Disease Control and Prevention (CDC.) Recommendation regarding the use of cloth face coverings, especially in areas of significant community-based transmission. April 3,

2020. Available at: <https://www.cdc.gov/coronavirus/2019-ncov/prevent-getting-sick/cloth-face-cover.html>. Accessed on: April 5, 2020.

38. Livingston E, Desai A, Berkwits M. Sourcing Personal Protective Equipment During the COVID-19 Pandemic. *JAMA*. 2020 Mar 28. doi: 10.1001/jama.2020.5317. [Epub ahead of print]

24. Centers for Disease Control and Prevention (CDC). Coronavirus Disease 2019 (COVID-19): strategies to optimize the supply of PPE and equipment. March 26, 2020. Available at: <https://www.cdc.gov/coronavirus/2019-ncov/hcp/ppe-strategy/index.html>. Accessed on March 31, 2020.

40. Centers for Disease Control and Prevention (CDC). The National Personal Protective Technology Laboratory (NPPTL): respirator fact sheet. January 20, 2012. Available at: <https://www.cdc.gov/niosh/npptl/topics/respirators/factsheets/respsars.html>. Accessed on: March 31, 2020.

41. Lindsley WG, Martin SB Jr, Thewlis RE, et al. Effects of ultraviolet germicidal irradiation (UVGI) on N95 respirator filtration performance and structural integrity. *J Occup Environ Hyg*. 2015;12(8):509-17.

42. Mills D, Harnish DA, Lawrence C, et al. Ultraviolet germicidal irradiation of influenza-contaminated N95 filtering facepiece respirators. *Am J Infect Control*. 2018 Jul;46(7):e49-e55.

43. Lowe JL, Paladino KD, Farke JD, et al. N95 filtering facepiece respirator ultraviolet germicidal irradiation (UVGI) process for decontamination and reuse. Available at: <https://www.nebraskamed.com/sites/default/files/documents/covid-19/n-95-decon-process.pdf>. Accessed on: March 31, 2020.

44. Schwartz A, Stiegel M, Greeson N, et al. Decontamination and reuse of N95 respirators with hydrogen peroxide vapor to address worldwide personal protective equipment shortages during the SARS-CoV-2 (COVID-19) Pandemic. Available at: Decontamination and Reuse of N95

- Respirators with Hydrogen Peroxide Vapor to Address Worldwide Personal Protective Equipment Shortages During the SARS-CoV-2 (COVID-19) Pandemic [PDF]. Accessed on: March 31, 2020.
45. Tsai PP. Information and FAQs on performance, protection, and sterilization of masks against COVID-19. March 25, 2020. Available at: <https://utrf.tennessee.edu/information-faqs-performance-protection-sterilization-of-masks-against-covid-19/>. Accessed on: March 31, 2020.
46. Nolte KB, Taylor DG, Richmond JY. Biosafety Considerations for Autopsy. *Am J Forensic Med Pathol*. 2002;23(2):107–22.
47. Pluim JME, Jimenez-Bou L, Gerretsen RRR, Loeve AJ. Aerosol production during autopsies: The risk of sawing in bone. *Forensic Sci Int*. 2018;289:260–7.
48. Pluim JME, Loeve AJ, Gerretsen RRR. Minimizing aerosol bone dust during autopsies. *Forensic Sci Med Pathol*. 2019;15(3):404–7.
49. Wenner L, Pauli U, Summermatter K, Gantenbein H, Vidondo B, Posthaus H. Aerosol Generation During Bone-Sawing Procedures in Veterinary Autopsies. *Vet Pathol*. 2017;54(3):425–36.
50. Brooks EG, Utey-Bobak SR. Autopsy Biosafety: Recommendations for Prevention of Meningococcal Disease. *Acad Forensic Pathol*. 2018;8(2):328–39.
51. Tian S, Hu W, Niu L, et al. Pulmonary pathology of early-phase 2019 novel coronavirus (COVID-19) pneumonia in two patients with lung cancer. *J Thorac Oncol*. 2020 Feb 28. pii: S1556-0864(20)30132-5. doi: 10.1016/j.jtho.2020.02.010. [Epub ahead of print]
52. Xu Z, Shi L, Wang Y, et al. Pathological findings of COVID-19 associated with acute respiratory distress syndrome. *Lancet Respir Med*. 2020 Feb 18. pii: S2213-2600(20)30076-X. doi: 10.1016/S2213-2600(20)30076-X. [Epub ahead of print]
53. Tse GM, To KF, Chan PK, et al. Pulmonary pathological features in coronavirus associated severe acute respiratory syndrome (SARS). *J Clin Pathol*. 2004;57(3):260–265.

54. Ruan Q, Yang K, Wang W, et al. Clinical predictors of mortality due to COVID-19 based on an analysis of data of 150 patients from Wuhan, China. *Intensive Care Med.* 2020 Mar 3. doi: 10.1007/s00134-020-05991-x. [Epub ahead of print].
55. Inciardi RM, Lupi L, Zacccone G, et al. Cardiac Involvement in a Patient With Coronavirus Disease 2019 (COVID-19). *JAMA Cardiol.* Published online March 27, 2020. doi:10.1001/jamacardio.2020.1096
56. Xinhuanet. Beijing hospital confirms nervous system infections by novel coronavirus. March 5, 2020. Available at: http://www.xinhuanet.com/english/2020-03/05/c_138846529.htm. Accessed on: March 31, 2020.
57. van Doremalen N, Bushmaker T, Morris DH, et al. Aerosol and Surface Stability of SARS-CoV-2 as Compared with SARS-CoV-1. *N Engl J Med.* 2020 Mar 17. doi: 10.1056/NEJMc2004973. [Epub ahead of print]
58. Kampf G, Todt D, Pfaender S. Persistence of coronaviruses on inanimate surfaces and their inactivation with biocidal agents. *J Hosp Infect.* 2020 Mar;104(3):246-251.
59. Centers for Disease Control and Prevention (CDC). Detailed disinfection guidance: interim recommendations for US households with suspected/confirmed coronavirus disease 2019. March 6, 2020. Available at: https://www.cdc.gov/coronavirus/2019-ncov/prepare/cleaning-disinfection.html?CDC_AA_refVal=https%3A%2F%2Fwww.cdc.gov%2Fcoronavirus%2F2019-ncov%2Fcommunity%2Fhome%2Fcleaning-disinfection.html. Accessed on: March 26, 2020.
60. American Chemistry Council Center for Biocide Chemistries. Novel coronavirus (COVID-19)-fighting products. March 26, 2020. Available at: <https://www.americanchemistry.com/Novel-Coronavirus-Fighting-Products-List.pdf>. Accessed on: March 27, 2020.

61. United States Environmental Protection Agency (EPA). List N: Disinfectants for Use Against SARS-CoV-2. March 26, 2020. Available at: <https://www.epa.gov/pesticide-registration/list-n-disinfectants-use-against-sars-cov-2>. Accessed on: March 27, 2020.
62. Tang JW, To K-F, Lo AWI, et al. Quantitative temporal-spatial distribution of severe acute respiratory syndrome-associated coronavirus (SARS-CoV) in post-mortem tissues. *J Med Virol*. 2007;79(9):1245–53.
63. Tse GM, To KF, Chan PK, et al. Pulmonary pathological features in coronavirus associated severe acute respiratory syndrome (SARS). *J Clin Pathol*. 2004;57(3):260–265.
64. Henwood AF. Coronavirus disinfection in histopathology. *J Histotechnol*. 2020 Mar 1:1-3. doi: 10.1080/01478885.2020.1734718. [Epub ahead of print]
65. Darnell ME, Subbarao K, Feinstone SM, et al. Inactivation of the coronavirus that induces severe acute respiratory syndrome, SARS-CoV. *J Virol Methods*. 2004 Oct 1;121(1):85–91.
66. US Food and Drug Administration (FDA). Coronavirus (COVID-19) Update: FDA Issues New Policy to Help Expedite Availability of Diagnostics. February 29, 2020. Available at: <https://www.fda.gov/news-events/press-announcements/coronavirus-covid-19-update-fda-issues-new-policy-help-expedite-availability-diagnostics>. Accessed on: March 28, 2020.
67. Daley J. Here’s how coronavirus tests work—and who offers them. *Scientific American*. March 27, 2020. Available at: <https://www.scientificamerican.com/article/heres-how-coronavirus-tests-work-and-who-offers-them/>. Accessed on: March 27, 2020.
68. US Food and Drug Administration (FDA). Cellex SARS-CoV-2 IgG/IgM Rapid Test - Letter of Authorization. Available at: <https://www.fda.gov/media/136622/download>. Accessed on: April 4, 2020.
69. Johns Hopkins Center for Health Security. Serology-based tests for COVID-19. April 2, 2020. Available at: <http://www.centerforhealthsecurity.org/resources/COVID-19/Serology-based-tests-for-COVID-19.html#sec5>. Accessed on: April 5, 2020.

70. Le AB, Brooks EG, McNulty LA, et al. U.S. Medical Examiner/Coroner capability to handle highly infectious decedents. *Forensic Sci Med Pathol*. 2019 Mar;15(1):31-40.
71. Fusco FM, Scappaticci L, Schilling S, et al. A 2009 cross-sectional survey of procedures for post-mortem management of highly infectious disease patients in 48 isolation facilities in 16 countries: data from EuroNHID. *Infection*. 2016 Feb;44(1):57-64.
72. Aiken SS, Gill JR, National Association of Medical Examiners (NAME). COVID-19 Press Release. Available at: <https://www.thename.org/assets/docs/COVID-19%20PRESS%20RELEASE.pdf>. Accessed on: March 31, 2020.
73. Chui P, Chong P, Chong B, Wagener S. Mobile Biosafety Level-4 Autopsy Facility-An Innovative Solution. *Applied Biosafety*.2007;12(4):238-44.
74. Zhang, Y, Gong, Y, Wang, C. Rapid deployment of a mobile biosafety level-3 laboratory in Sierra Leone during the 2014 Ebola virus epidemic. *PLoS Negl Trop Dis*. 2017;11(5):e0005622.
75. Rao V, Bordelon E. Mobile high-containment biological laboratories deployment: opportunities and challenges in expeditionary deployments to outbreak response. *Applied Biosafety*. 2019; 24(1) 20-29.
76. Snohomish County Medical Examiner Office. Medical Examiner's COVID-19 Release Procedure & Handling Guidelines. Available at: <https://www.snohomishcountywa.gov/5585/COVID-19>. Accessed on: March 31, 2020.
77. Centers for Disease Control and Prevention (CDC). Coronavirus Disease 2019 (COVID-19): frequently asked questions. Available at: <https://www.cdc.gov/coronavirus/2019-ncov/faq.html#funerals>. Accessed on: March 31, 2020.
78. National Funeral Directors Association (NFDA). Situation Update: Novel Coronavirus (COVID-19). Available at: <https://www.nfda.org/covid-19>. Accessed on: March 31, 2020.

FIGURE LEGENDS

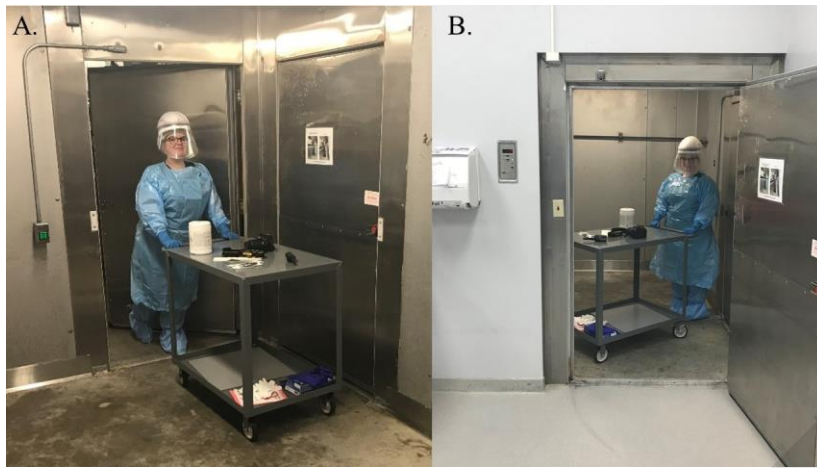
Figure 1 (A-B): Isolation cooler “airlock” entrance from body receiving area (A) and access to the isolation suite (B); note, full PPE required for entry into the airlock.

Figure 2: Fig. Autopsy PPE on left with a full face-shield powered air-purifying respirator and liquid impervious gown; Scene investigation PPE on right with disposable facemask respirator (shown with N95 but current requirements are for surgical mask only), fluid resistant gown, and eye protection.

Figure 3: Unfixed moderately heavy, edematous, and relatively firm lungs with areas of hemorrhage in the right upper/middle lobes and left lower lobe.

Figure 4 (A-F): H&E stained sections at original magnification of 100x (A, B) and 400x (C-F). Lung parenchyma exhibits inflamed septae, hyaline membranes, and pneumocyte hyperplasia, (A); septal and perivascular mononuclear inflammation, (B); hyaline membranes and alveolar fibrin, (C); intralveolar macrophages and reactive pneumocytes, (D); marked pneumocyte hyperplasia, (E); with sporadic multinucleated cells, (F).

Figure 1



ACCEPTED

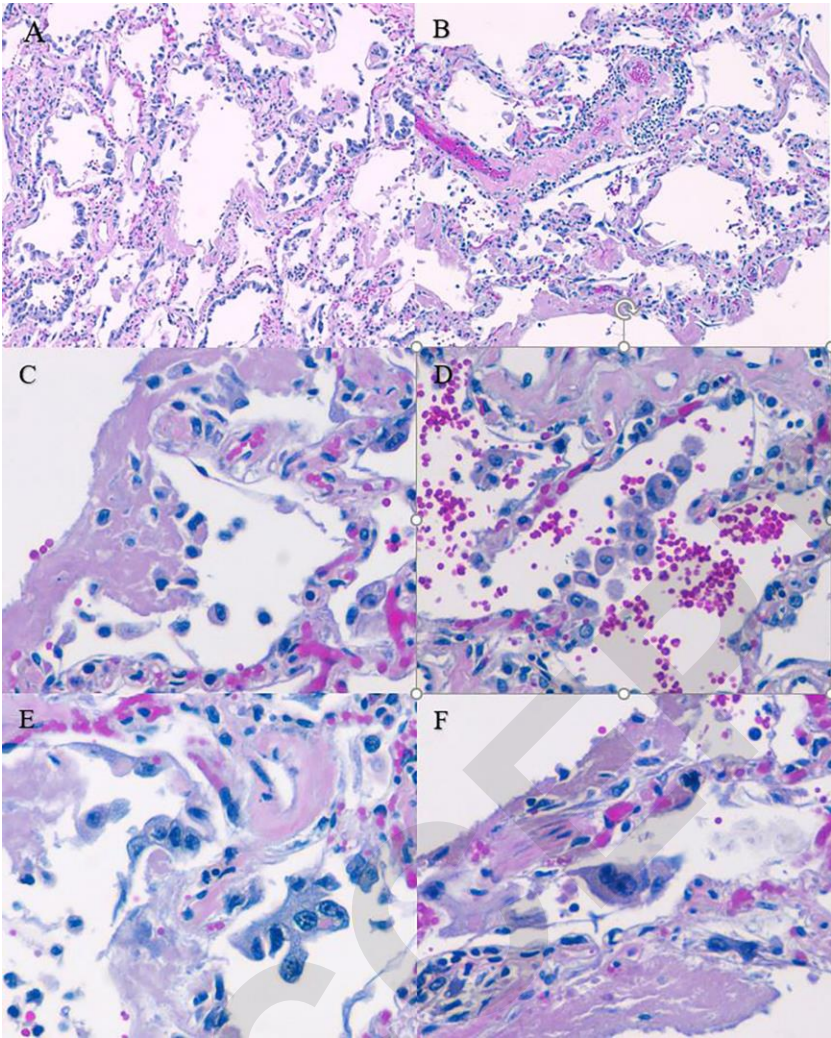
Figure 2



Figure 3



Figure 4



TABLES

Table 1

Table 1: Scene Investigative Recommendations in Suspected/Confirmed COVID-19 Cases
<ul style="list-style-type: none">• Employ social distancing practices during scene interviews outside the residence
<ul style="list-style-type: none">• Require interviewees to remain outside when entering residence
<ul style="list-style-type: none">• Doff contact and droplet precaution PPE during scene investigations
<ul style="list-style-type: none">• If COVID-19 testing is warranted, consider obtaining NP swab at scene to expedite process
<ul style="list-style-type: none">• Minimize exposure of excess personnel or equipment to scene
<ul style="list-style-type: none">• Decontaminate exposed equipment and vehicles
<ul style="list-style-type: none">• Perform hand hygiene after any unprotected contact with a potentially infectious surface and after doffing PPE
<ul style="list-style-type: none">• Ensure bodies are fully enclosed in secure bag during transport to reduce change of leakage
<ul style="list-style-type: none">• Do not expose the body until it is in an isolation suite

ACCEPTED

Table 2

Table 2: Autopsy Recommendations in Suspected/Confirmed COVID-19 Cases
<ul style="list-style-type: none"> • Prosect cases in negative pressure isolation suite with at least 6-12 air changes per hour
<ul style="list-style-type: none"> • Doff contact and droplet precaution PPE, as well as N95 respirator or PAPR
<ul style="list-style-type: none"> • Limit personnel in the isolation suite to the minimum necessary to perform the examination
<ul style="list-style-type: none"> • Employ splash and aerosol reduction techniques during prosection; oscillating saws are discouraged but if used should have vacuum shroud attachment
<ul style="list-style-type: none"> • Use caution when handling sharps; allow only one person to prosect at a given time
<ul style="list-style-type: none"> • Ensure a technician is outside isolation room to monitor procedure and provide support as needed
<ul style="list-style-type: none"> • Procure synthetic nasopharyngeal (+/- lung) respiratory swabs in sterile tubes of 2-3 ml of viral transport media for SARS-CoV-2 testing as needed
<ul style="list-style-type: none"> • Carefully decontaminate morgue surfaces and outer body bag following autopsy
<ul style="list-style-type: none"> • Ensure body is fully enclosed in a secure bag, tag as infectious and ensure funeral home is informed
<ul style="list-style-type: none"> • Consider modifying release procedures to prevent bag being opened in morgue for identification
<ul style="list-style-type: none"> • Perform hand hygiene after doffing PPE